

ADDENDUM # 1

IFB # V-1679 – Bus Operator Safety Barrier

January 25, 2017

Dear Prospective Bidders:

The purpose of this addendum is to answer questions for and make revisions in the above referenced Invitation for Bids (IFB). The following answers to questions and/or clarifications and revisions are hereby made part of the IFB and the ensuing contract.

All other provisions and requirements as originally set forth in the IFB, except as amended by an addendum, remain in full force and are binding.

The IFB requires that all bidders must appropriately acknowledge this addendum in their bid submittal. Failure to do so may render a bid nonresponsive and therefore disqualified.

Any questions related to this addendum shall be submitted in writing to najeem.ahmad@transdev.com.

Revisions

A) Following Revisions are made to the IFB Section 2: Instruction for Bidders:

1. Transdev Services, Inc. (Transdev) doing business as Nassau Inter-County Express (NICE Bus) (hereinafter called “NICE Bus”) invite responsible firms to submit their firm-fixed price bids for work to furnish and install Bus Operator Safety Barrier. **Sealed bids must be received by 02:00 P.M. EST on ~~01/31/2017~~ 02/14/2017 (bid due date and time) by NICE Bus at the Senator Norman J. Levy / Mitchel Field Facility, 700 Commercial Avenue Garden City, N.Y. 11530. Bids will be publicly opened and read at 02:05 P.M. EST on same date and at same location.** Bids received AFTER the Bid Due Date and Time is considered LATE and will **NOT** be accepted, and will be returned to the Bidder unopened. Bidders are solely responsible for the timely receipt of the Bids by NICE Bus. Appropriate adjustments to the Bid Due Date will be made at NICE Bus’s sole discretion.
5. All Bidders’ questions including clarifications and exception regarding this IFB are due by close of business on 01/17/2017. NICE Bus will respond to all of the questions, clarifications, and exceptions promptly after the questions due date and time.

The due date for any new questions or clarification requests is 02/02/2017.

6. A non-mandatory Pre-Bid Conference is scheduled on 01/12/2017, 10:00 a.m. EST at Senator Norman J. Levy / Mitchel Field Facility, 700 Commercial Avenue Garden City, N.Y. 11530.

A second non-mandatory site tour is scheduled for 02/01/2017 at 10:00am EST at 700 Commercial Avenue, Garden City, NY 11530.

B) Following Revisions are made to the IFB Section 7: Bid Sheet:

Bid Sheet is revised to itemize bus series and its associated work. The Revised Bid Sheet is in the following page.

C) Following Revisions are made to the IFB Appendix B: Drawings:

Drawings are revised to include dimensions of the Bus Operator Safety Barrier for each of the bus series. The drawings are in the following pages.

BID SHEET

Print Company Name _____

Item	Description	Qty	Price Each	Extended Price
1	Bus Operator Safety Barrier <u>for NICE Bus's 1700 series of Orion VII</u> as specified in section 6	<u>100</u>	\$	\$
2	<u>Removal of stanchion rail and Installation Services for the new barrier</u>	<u>100</u>	\$	\$
<u>3</u>	<u>Bus Operator Safety Barrier for NICE Bus's 1800 series of Orion VII</u> as specified in section 6	<u>84</u>	\$	\$
<u>4</u>	<u>Removal of half metal driver door and installation services for the new barrier</u>	<u>84</u>	\$	\$
Total				\$

Total Bid in words: _____

Bidder's Signature: _____ Date: _____

Print Name: _____

Company Name: _____

Company Address: _____

Federal ID#: _____ Phone #: _____ Fax #: _____

E-Mail: _____

Appendix B: Revised Drawings for 1800 Series Buses

ITEM	PART NUMBER	TITLE	COMMENTS	QUANTITY
1	NICE-ORION-VII-100	MOUNTING ASSEMBLY TO THE CABINET	2 STANCHIONS AND SHEET METAL BRACKET	1
2	NICE-ORION-VII-200	BARRIER FRAME ASSEMBLY AND PANEL	ALUMINUM FRAME WITH 3/8" AS2 TEMPERED/LAMINATED GLASS WITH ANTI-GLARE COATING	1
3	NICE-ORION-VII-300	FARE BOX STANCHION LATCHING MECHANISM	Ø 1.25 OD TUBING WITH FITTINGS	1

REVISIONS			
REV	DESCRIPTION	DATE	APPR
-	NOT RELEASED FOR PRODUCTION	08/21/15	NICE
A	ADDED DIMENSIONS	01/24/17	NICE

NOTES:

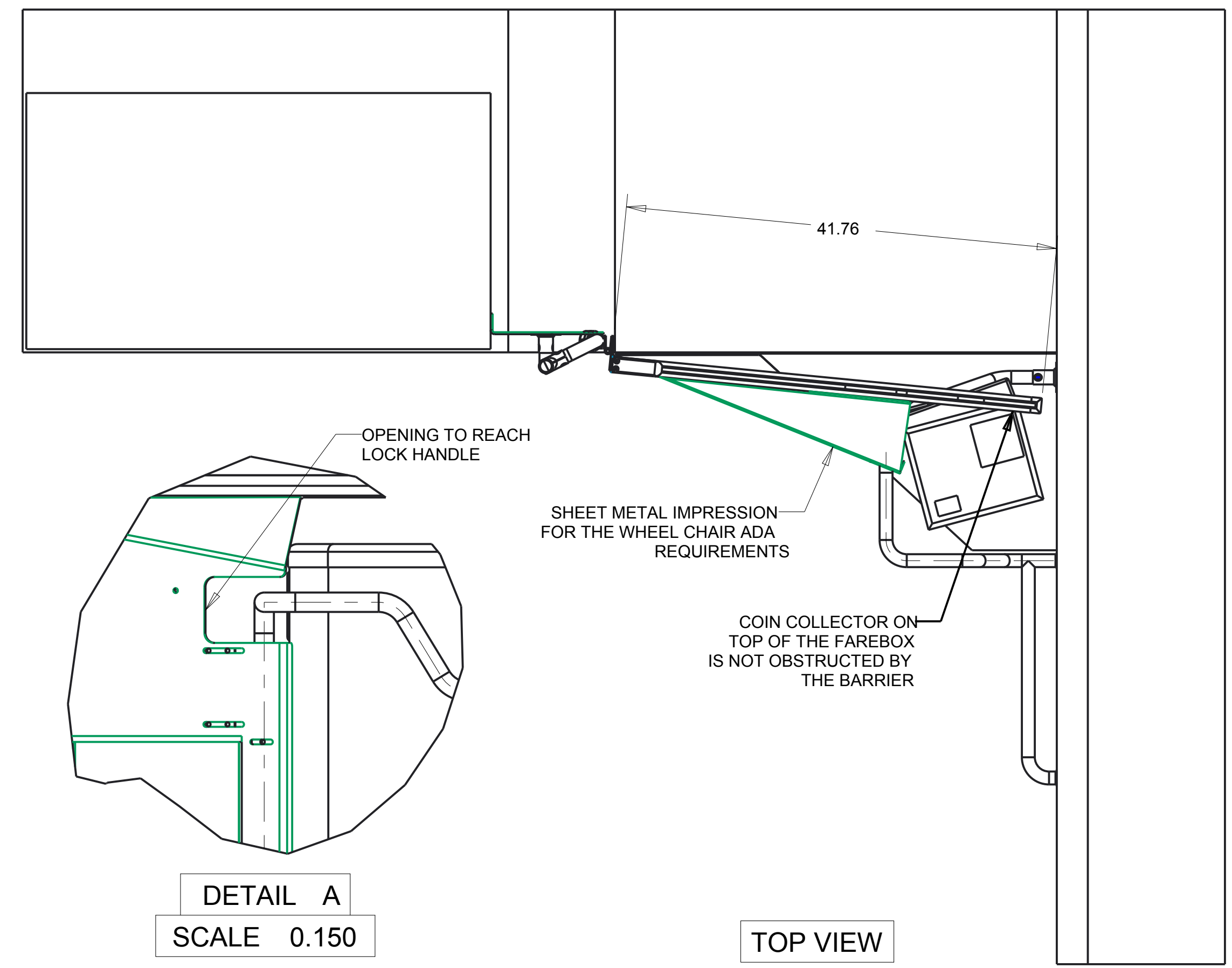
- 1) MATERIAL:
UPPER GLAZED CLEAR PANEL TO BE 3/8" NOMINAL THK TEMPERED/LAMINATE AS2 GLASS WITH PYROLYTIC ANTI-GLARE COATING
LOWER PORTION OF THE FRAME TO BE SHEETMETAL AND PWD COATED SEMI-GLOSS BLACK
- 2) BURRS: REMOVE ALL BURRS AND BREAK ALL SHARP EDGES .06 MIN - .125 MAX REMOVE WELD SPATTER AND DISCOLORATION
- 3) THE BARRIER ASSEMBLY MUST COMPLY WITH ADA WHEELCHAIR SAFETY REQUIREMENTS
- 4) THE BARRIER SHALL NOT IMPEDE THE VISIBILITY OF THE REAR VIEW MIRROR ON THE CURB SIDE OF THE BUS
- 5) THE BARRIER SHALL BE RATTLE FREE DURING NORMAL BUS OPERATION
- 6) THE BARRIER SHALL BE POSITIVELY LOCKED USING THE SLAMP LATCH WITH THE DOWNWARD/UPWARD OPERATED HANDLE
- 7) TORQUE HARDWARE TO 5-7 FT-LBS UNLESS OTHERWISE SPECIFIED
- 8) APPLY APPROPRIATE SEALANT TO INNER THREADS OF HARDWARE
- 9) PAINTING/PWD COATING IS NOT INCLUDED IN DRAWING DIMENSIONS OR 3D MODEL
- 10) BARRIER SHOWN IN THE CLOSED POSITION
- 11) DO NOT USE FOR PRODUCTION PRIOR TO NICE APPROVAL
- 12) ALL DIMENSIONS ARE REFERENCE DIMENSIONS AND MAY VARY FROM BUS TO BUS DURING INSTALLATION

POWDER COAT SPECIFICATIONS:

- 1) BEFORE POWDER COATING PART. ENSURE PART IS CLEAN AND FREE OF DIRT, DUST, OIL, GREASE, SILICONE AND VISIBLE WELD SPATTER AND DISCOLORATION ARE REMOVED
- 2) COLOR: SEE PART SPECIFIC DRWS
POLYESTER OR NYLON BASE
POWDER COAT SUPPLIER
VENDOR P/N: N/A
- 3) THICKNESS:
FOR POLYESTER SPRAY
MINIMUM .05 MM (.002 IN = 2 MIL)
MAXIMUM 0.10 MM (.004 IN = 4 MIL)
FOR NYLON DIP
MINIMUM (.008 IN = 8 MIL)
MAXIMUM (.015 IN = 15 MIL)
- 4) MASKING DIRECTIONS: SEE PART SPECIFIC DRWS

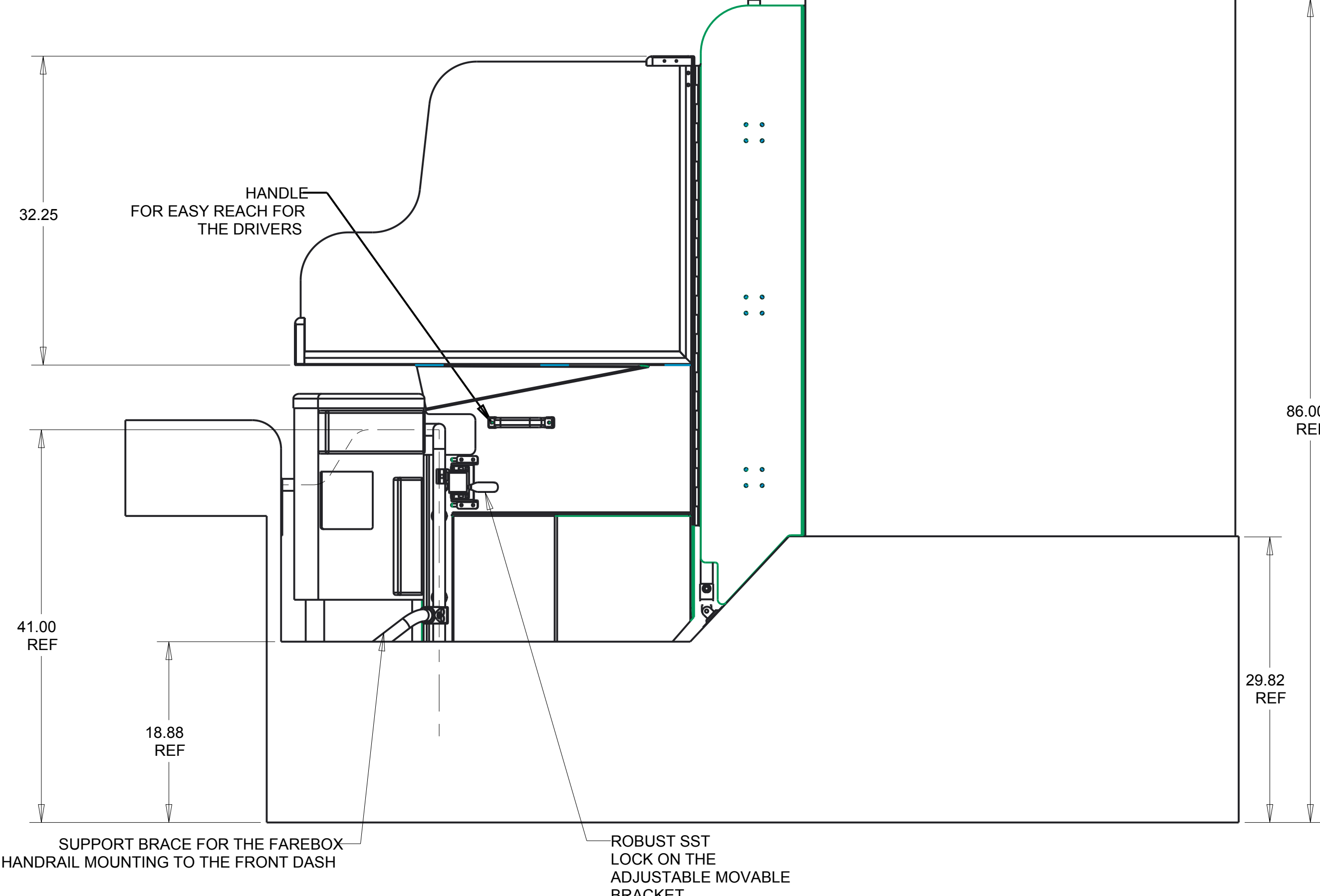
WELDING REQUIREMENTS:

WELD PROCESS: GTAW (TIG WELDING)
FILLER MATERIAL: ER 308 LSI (BY AWS A5.9), 1/16" OR .305" WIRE
ER 316 L (BY AWS A5.9), 1/16" OR 3/32" WIRE
4043 (BY AWS A5.14), 1/16" OR 3/32" WIRE
5356 (BY AWS A5.14), 1/16" OR 3/32" WIRE
ER 70S-6 (BY AWS A5.18), 1/16" OR 3/32" WIRE
WELD INSPECTION: VISUAL EXAMINATION 100%
STEEL ARC WELDING ACCORDING TO AWS D1.1
STAINLESS STEEL ARC WELDING ACCORDING TO AWS D1.6
RESISTANCE WELDING: CLASS B ACCORDING TO AWS 17.2 UNLESS OTHERWISE SPECIFIED

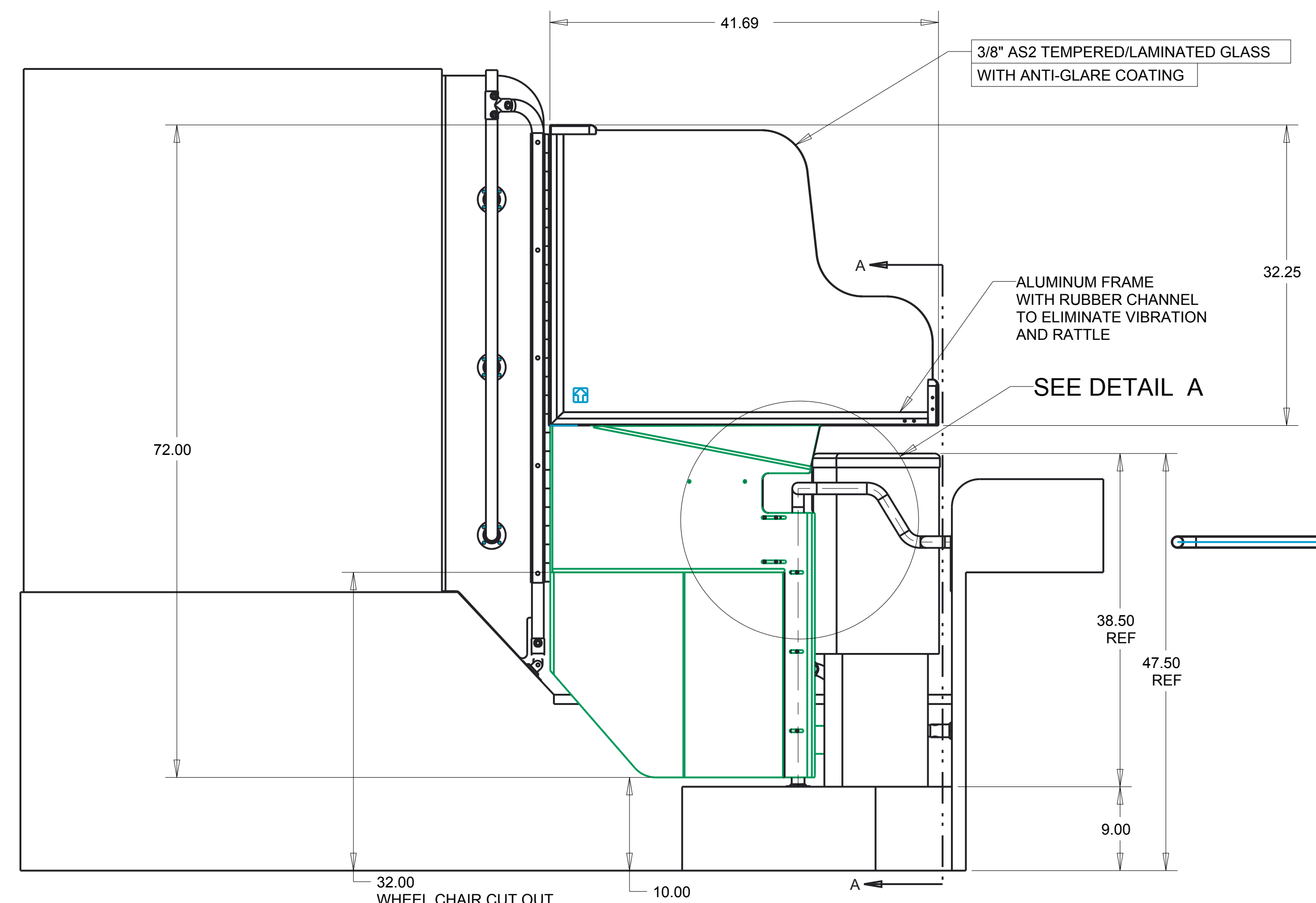


DETAIL A
SCALE 0.150

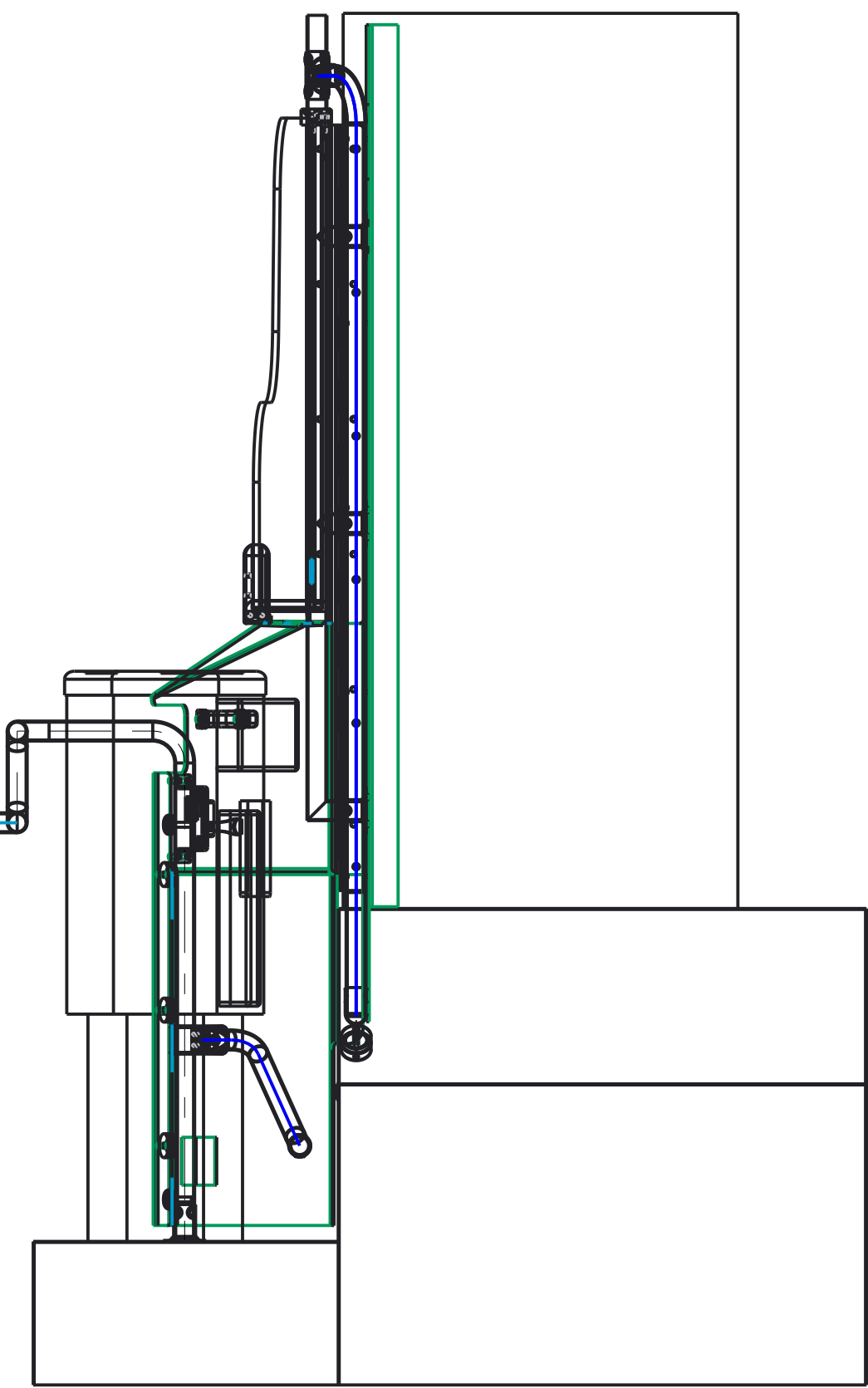
TOP VIEW



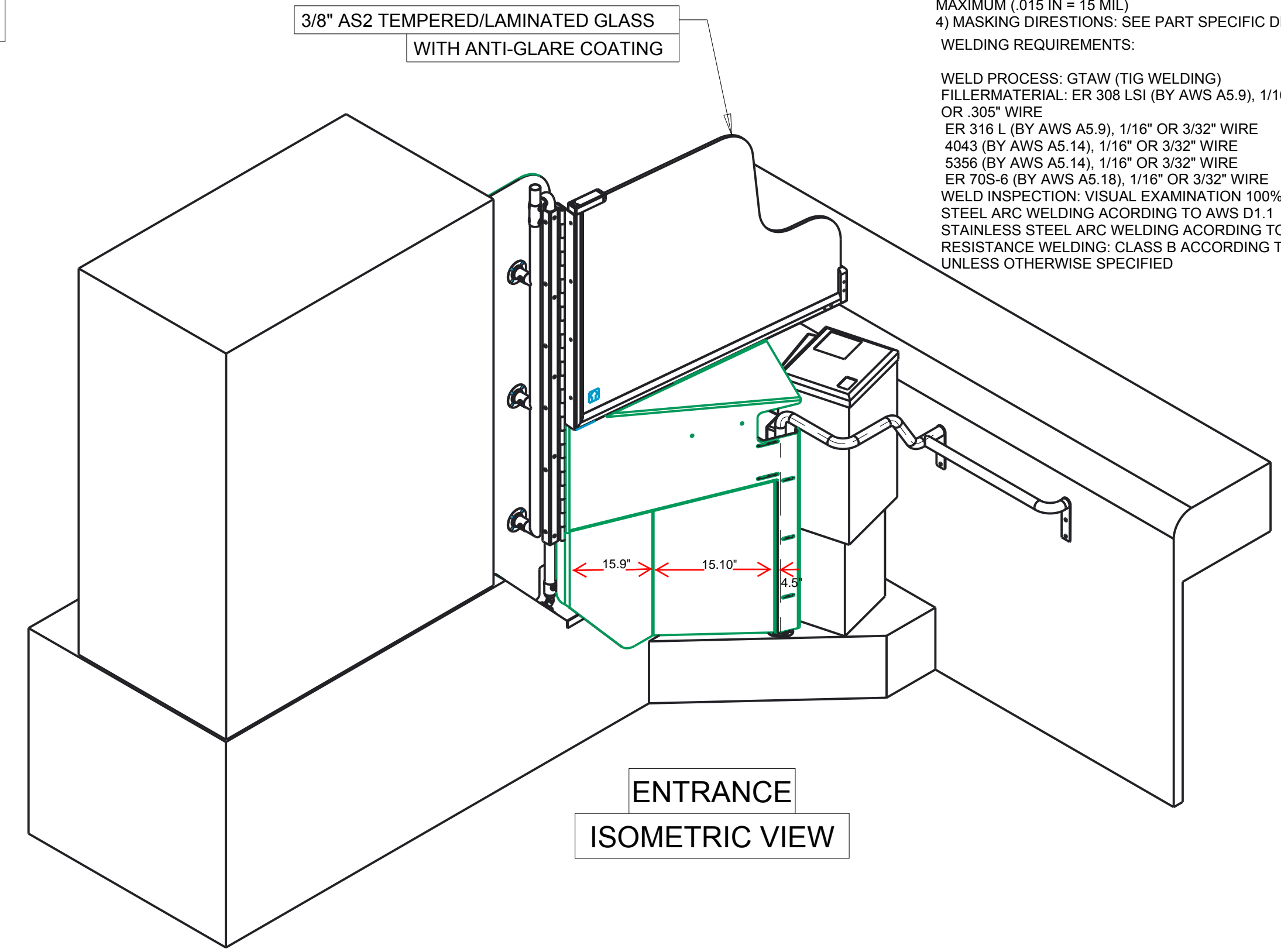
DRIVER SIDE VIEW



ENTRANCE VIEW



SECTION A-A
FRONT VIEW



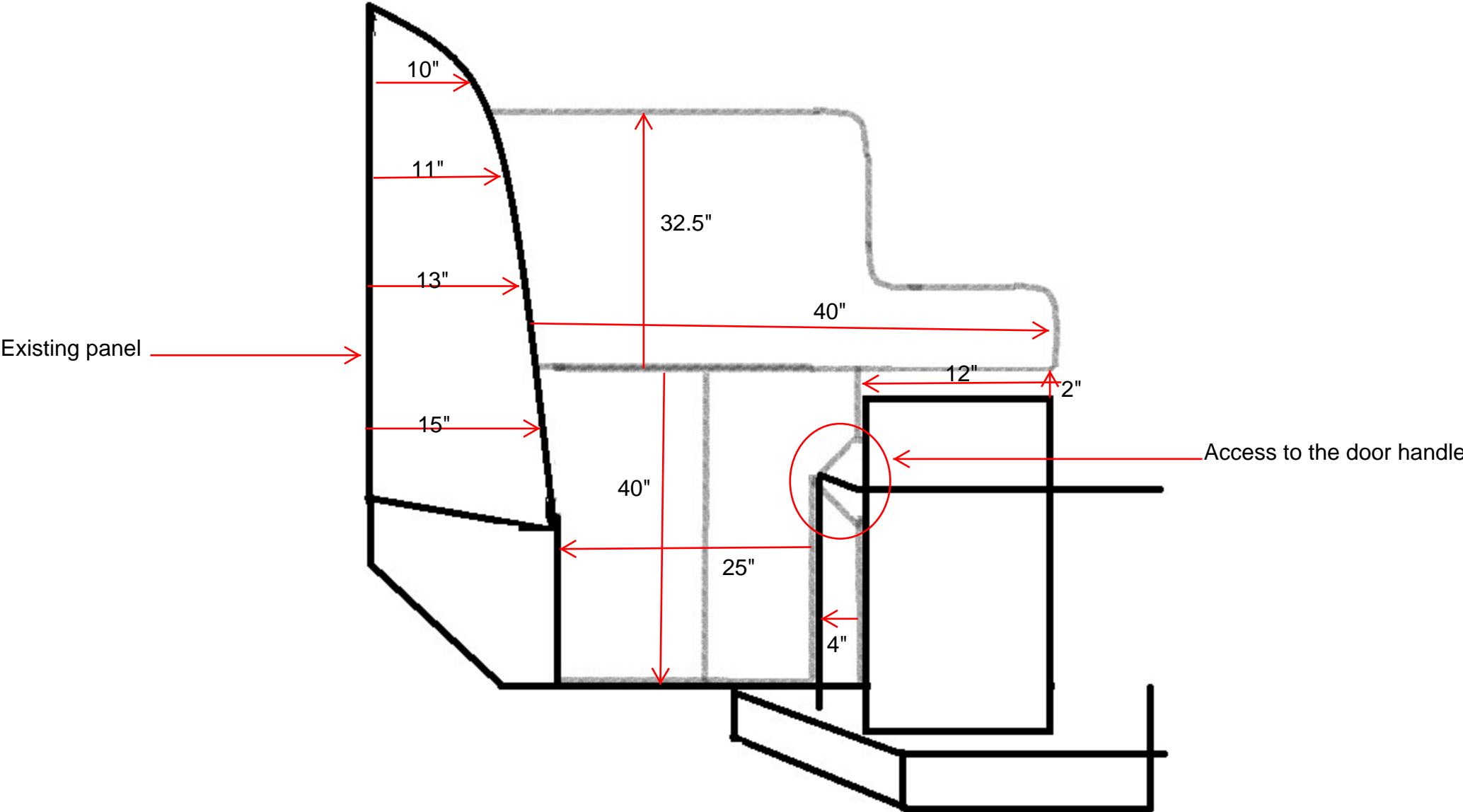
ENTRANCE
ISOMETRIC VIEW

THIS DRAWING IS INTENDED TO CONVEY THE INFORMATION CONTAINED THEREIN TO CUSTOMERS, PROSPECTIVE CUSTOMERS AND VENDORS AND IS TO BE CONSIDERED THE EXCLUSIVE PROPERTY AND PROPRIETARY IN NATURE TO NICE BUS. IT SHALL NOT BE REPRODUCED OR COMMUNICATED TO OTHERS, DIRECTLY OR INDIRECTLY, WITHOUT FIRST OBTAINING THE WRITTEN PERMISSION OF NICE BUS.

		NICE ORION VII DRIVER BARRIER	
DWG. NO.	NICE-ORION-VII	ELEC. FILE NO.	
DATE	12/21/16	SCALE	1:10
DESIGNED AND ENGINEERED BY		SHT.	1 OF 1
DATE	12/21/16	REV.	A
APPROVED BY		DATE	12/21/16

Appendix B: Drawings for 1700 Series Buses

Design of Bus Operator Safety Barrier for 1700 Series of Orion VII buses. Gray/pencil lines indicate the driver barrier. Drawing not to scale. Dimensions are approximate. Actual dimensions may vary. Glass edges must be curved and similar to the design given for 1800 series.



Questions and Answers

Question 1: May we have a list of people /companies attending today's Pre-Bid meeting

Answer: The Pre-Bid meeting sign-in sheet is attached to this addendum.

Question 2: May we have a list of people / companies requesting the bid package.

Answer: The Plan Holders' list for the IFB is attached to this addendum.

Question 3: Please let us know the number of 1700 and 1800 series Orion VII Buses.

Answer: The total number of our 1700 series Orion VII buses is 100, and the total number of our 1800 series Orion VII buses is 84.

Question 4: Please let us know the Number of Buses with the existing Orion installed Half door (and the model series of these buses)

Answer: Only our 1800 series Orion VII buses have half barrier doors installed in them and their total count is 84.

Question 5: Please let us know the Number of Buses with the existing Orion installed swivel barrier by the driver(and the model series of these buses)

Answer: Only our 1700 series Orion VII buses have a stanchion rail barrier installed in them and their total count is 100.

Question 6: It appears that the Orion VII 1700 and 1800 series buses will require a different Bus Operator Safety Barrier (BOSB) Therefore, I recommend that the Bid document be changed to include four line items. Two for the Purchase of the BOSB and Installation Services for the 1700 series buses and two for the Purchase of the BOSB and Installation Services for the 1800 series buses.

Answer: See revised bid sheet in this addendum.

Question 7: Will NICE require production drawings for approval prior to manufacture of the BOSB?

Answer: Prior to the award and as a condition for an award of the contract, as part of responsibility determination, the lowest responsive bidder will be requested to take actual measurements for both – 1700 and 1800 series buses, and provide product drawings for NICE Bus review and acceptance.

Question 8: Will NICE require a Preproduction, Installed BOSB for each of the 1700 and 1800 series Buses.

Answer: Yes. Prior to the award and as a condition for an award of the contract, as part of responsibility determination, the lowest responsive bidder will be requested to take actual measurements for both – 1700 and 1800 series buses, and provide product drawings of each for NICE Bus review and acceptance. After the drawing acceptance, the lowest responsive bidder will be requested to provide and install a first article product for NICE Bus acceptance prior to an award.

Question 9: Once Notice to proceed is given we would plan to build all 184 BOSB. Will NICE purchase all 184 BOSB in the event that NICE decides not to use all 184 BOSB?

Answer: NICE Bus intends to equip a total of 184 buses, which comprise of 1700 and 1800 series Orion VII buses, with Bus Operator Safety Barrier as specified in the IFB. Nonetheless, it is the Contractor’s responsibility to confirm, in writing, the quantity with NICE Bus Project Manager prior to production.

Question 10: Please let us know if New York State content is required for this contract.

Answer: Question is unclear.

Question 11: Please let us know if any other company or person(s) request a second site visit to review or measure the buses.

Answer: Only one non-mandatory site tour was given after the Pre-Bid Conference held on January 12, 2017 at 10:00am EST.

Question 12: Please let us know if this contract requires participation by New York State registered companies.

Answer: The IFB does not mandate participation of New York State registered companies.

Question 13: Please let us know if the Bid Opening Date of January 31 will be changed for any reason.

Answer: See revised procurement schedule in this addendum.

Question 14: Our Eng Support has inquired and ask if CAD data is available (in STEP format) for the barrier assembly and components ?

Answer: The requested information is not available.

Question 15: Please confirm the quantity split up between 1700 and 1800 bus series.

Answer: See answer to question # 3.

Question 16: Would alternative glazing materials be considered or would you want to stay with AS2 glass with pyrolytic anti glare glass specified on the drawing to reduce and minimize the glare?

Answer: No change to the original requirements.

Question 17: Would 2 different prototypes for each series be required prior to production after the bid is awarded?

Answer: Yes. The product prototype will be requested **prior** to the award and as a condition for an award of the contract. As part of responsibility determination, the lowest responsive bidder will be requested to take actual measurements for both – 1700 and 1800 series buses, and provide product drawings of each for NICE Bus review and acceptance. After the drawing acceptance, the lowest responsive bidder will be requested to provide and install a first article product for NICE Bus acceptance **prior** to an award.

Question 18: Is Jan 31 still the deadline for bid submittal?

Answer: See revised procurement schedule in this addendum.

Question 19: Will drawings supplied by NICE be amended to include dimensions?

Answer: Drawings are attached to this addendum.

Question 20: Will the 184 units specified on the bid for Orion VII be confirmed as in the prebid meeting it was noted that NICE does not own 184 Orion VII ?

Answer: Yes. It is confirmed that the total count of 184 buses in the IFB is comprised of 1700 and 1800 series of Orion VII buses.

Question 21: Will the bid be changed to include NICE Orion V models?

Answer: No change to the original requirements. See answer to question # 20.

Question 22: Will a new design be presented for Orion V configurations?

Answer: No change to the original requirements. See answer to question # 20.

Question 23: Will a “First Article Inspection “ be required prior to installation of remaining fleet?

Answer: See answers to question # 7, # 8 and # 17.

Question 24: Will successful supplier be allowed to install barriers during non-standard hours? Ie evenings and weekends.

Answer: Subject to availability of the buses, the Contractor will be permitted to work on weekends and after normal business hours including evenings.

Question 25: During bus inspection at prebid meeting it was noticed that the Orion VII had an existing draft door installed. Who will be responsible for removal and disposal of the existing draft door?

Answer: The Contractor will be responsible to dismantle the existing driver panel or door in an environmentally safe manner and coordinate its handling with NICE Bus Project Manager. NICE Bus will take possession of the removed driver panel or door.

Question 26: During bus inspection at prebid meeting it was noticed that the Orion V had an existing drivers stanchion rail installed. Who will be responsible for removal and disposal of the drivers stanchion rail?

Answer: The Contractor will be responsible to dismantle the existing driver stanchion rail in an environmentally safe manner and coordinate its handling with NICE Bus Project Manager. NICE Bus will take possession of the removed driver metal bar stanchion.

Question 27: Will space be provided indoors to accommodate installation work?

Answer: Yes.

Question 28: Who would be the contact for acceptance of finished barriers?

Answer: NICE Bus Project Manager.

Question 29: Will Transdev-NICE be providing a confirmed fleet break down of their Orion buses and models relating to IFB No. V1679 ?

Answer: See answer to question # 3.

Question 30: Will permission be granted for another site visit to inspect buses and complete measurement of mounting positions and locating of tapping plates?

Answer: See revised procurement schedule in this addendum.

Question 31: What are the requirements for submitting for an approved equal designed drivers barrier?

Answer: The barrier design is given in the IFB document. For a product to be acceptable, it must meet the technical specifications and design given in the IFB document.

Question 32: [Name intentionally omitted] request an extension for bid IFB V-1679 Bus Operator Safety Barriers for a period of 3 weeks to allow for Engineering and Design considerations.

Answer: See revised procurement schedule in this addendum.

Question 33: [Name intentionally omitted] requests a weekly production rate or schedule for the length of the program.

Answer: Question is unclear.

Question 34: Can NICE please clarify if there is a timeline for the barrier design to be submitted by the contractor?

Answer: Prior to the award and as a condition for an award of the contract, as part of responsibility determination, the lowest responsive bidder will be requested to take actual measurements for both – 1700 and 1800 series buses, and provide product drawings for NICE Bus review and acceptance. NICE Bus anticipates the aforesaid process to be completed within 45 calendar days.

Question 35: [Name intentionally omitted] requests clarification if there will be a timeline for property approval of the barrier design?

Answer: See answer to question # 34.

Question 36: Can NICE please clarify if there will be some functional testing and if so what that looks like and when would that take place?

Answer: See answers to question # 7, # 8, # 17, and # 34.

Question 37: Can NICE please clarify if a float will be made available?





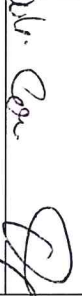

Answer: Question is unclear.

Question 38: [Name intentionally omitted] requests clarification if there will be someone at NICE assigned to oversee this project?

Answer: Yes. NICE Bus Project Manager or his representative will be at site to oversee the work.

(End of Addendum)

**IFB No. V-1679 – Pre-Bid Conference and Site Tour
 Bus Operator Safety Barrier
 Participants sign in sheet
 01/12/2017; 10:00AM EST**

#	Company Name	Company Representative	Phone	Email address	Signature
1	Bentech Inc.	Vasyl Ishchenko			
2	Bentech Inc.	Robert Benninghoff	215-225-8955	sales@bentechinc.com	
3	New Flyer	Rick Glaston	800-665-2637	rick_glaston@newflyer.com	
4	Natsco Transit Solutions	Mark Dubeau	631-921-7582	markdubeau@natscotransitsolutions.com	
5	Misc	LARRY HERNY	516-2916 4721	LARRY HERNY. TRANSIT AND TRAVEL CO.	
6	RTA	RadiCore		RadiCore@transdev.com	
7					
8					
9					

#	Company Name	Company Address	Contact Name	Contact Telephone Number	Contact Email Address
1	Complete Coach Works	1863 Service Ct. Riverside, CA 92507	Kris Carson	951-684-9585	bids@completecoach.com
2	Muncie Transit Supply / ABC Companies	3720 S. Madison St. / Muncie, IN 47302	Karen Louck	765.216.3287	KLouck@abc-companies.com
3	Bird Bus Sales	155 Terminal Dr Plainview, NY 11803	Eddie Morales	516-506-0839	Eddie@Birdbussales.com
4	New Flyer	630 Kernaghan Ave, Door 76, Winnipeg, MB R2C 5G1	Finley Myskiw	204-982-8426	finley_myskiw@newflyer.com
5	Bentech Inc.	4135-65 North 5th Street Philadelphia, PA 19140	Vasyl Ishchenko	(215)225-8955	Vasyl@bentechinc.com
6	Vaporbus International/Ricon Corp	1010 Johnson Dr, Buffalo Grove, IL 60089	Vincent Ryman	914-774-4234	VRyman@Wabtec.com
7	AROW Global Corp.	924 N. Park View Circle Mosinee, WI 54455	Tom Klos	715-693-6020	tklos@arowglobal.com
8	Natsco Transit Solutions	24 Bridle Path Road, Smithtown, NY 11787	Mark Dubeau	631-921-7582	markdubeau@natscotransitsolutions.com
9	Onvia	509 Olive Way Seattle, WA 98101	Jacqueline Sessa	(206) 373-9150	jsessa@onvia.com
10	Nova Bus and Prevost Divisions	2250 Point Boulevard, Suite 410 Elgin, Illinois 60123	Janice Karijolic	847 844-7680	janice.karijolic@volvo.com