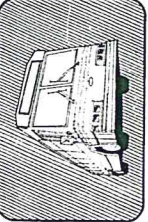


Attachment 'A'



County of Nassau
Department of Public Works
Division of Buildings Planning & Design



**MITCHEL FIELD'
TRANSIT FACILITY**
Unionsdale, New York

Architects and Engineers
Wiedersam Associates and
Michael Baker, Jr. of New York, Inc.
A Joint Venture
200 Madison Avenue
New York, N.Y. 10017
In Association With
Leroy Callender/PC
140 West 11th Street
New York, N.Y. 10011

Record Drawing of Work as Built
As of May 1, 1989

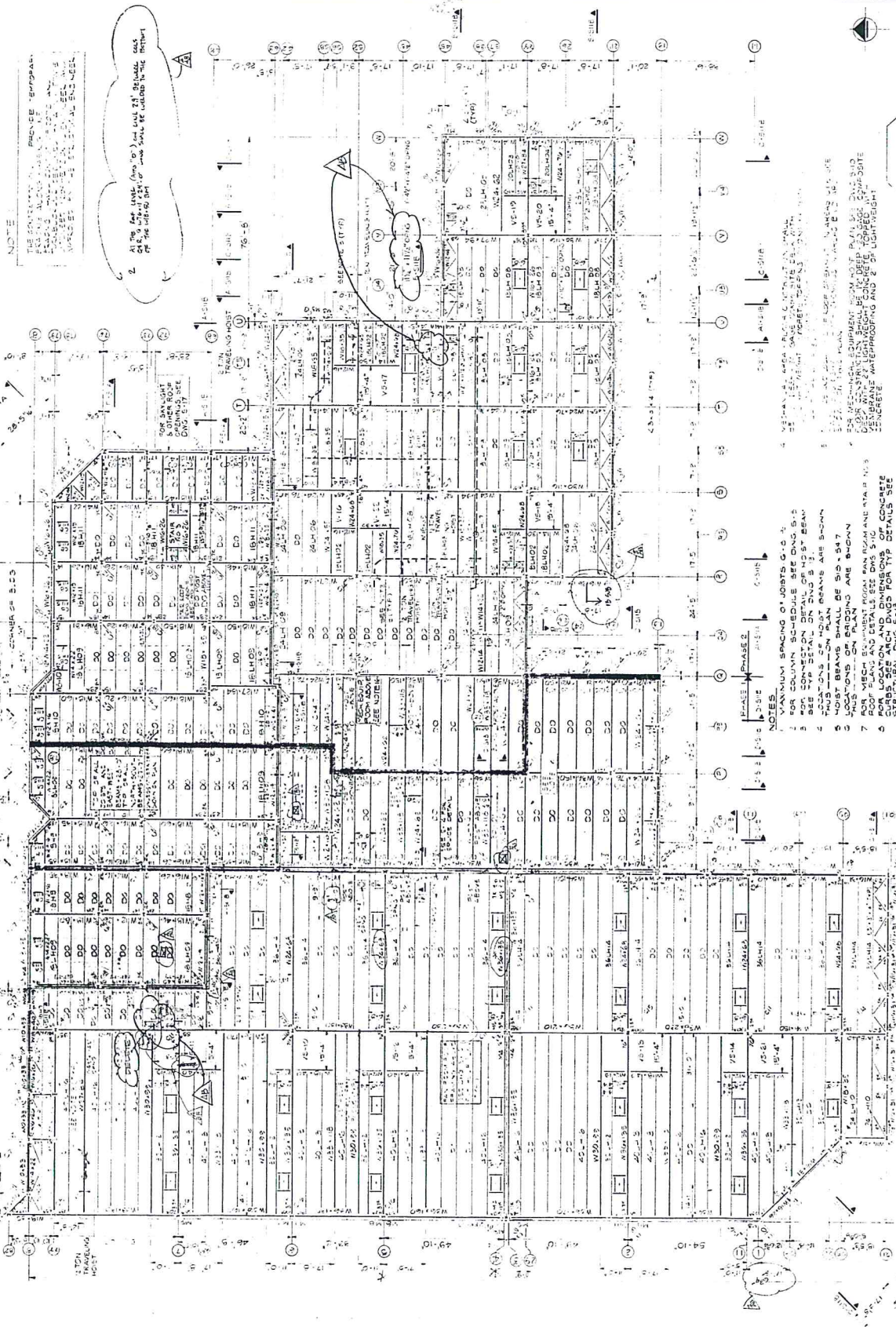


| | |
|-------------|--------------|
| DESIGNED | H.K. |
| DRAWN | S.D. |
| CHECKED | N.B. |
| APPROVED | L.G. |
| PROJECT NO. | W48214 |
| DATE | 5-15-85 |
| SCALE | 1/8" = 1'-0" |

| | | | |
|----------|---------|------|-------------------|
| REVISION | NO. | DATE | DESCRIPTION |
| 1 | 10-2-87 | | AS-BUILT PHASE I |
| 2 | 4-18-87 | | PHASE I FINAL |
| 3 | 10-2-87 | | AS-BUILT PHASE II |
| 4 | 10-2-87 | | FINAL |

Contract No. B912506
Draw. No. S-9

85

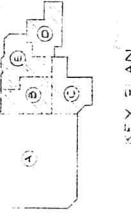


NOTE
THE ENTIRE ROOF SHALL BE CONCRETE ON TOP OF STEEL DECK WITH 2" MIN. THICKNESS. ALL JOINTS SHALL BE REINFORCED WITH 4# BARS. SEE DETAIL S-9.1 FOR JOINT DETAILS. ALL JOINTS SHALL BE REINFORCED WITH 4# BARS. SEE DETAIL S-9.1 FOR JOINT DETAILS.

2. AT THE EAST WALL (WALL 'D') AND WALL 'E', REINFORCE ROOF WITH 4# BARS AT 12" O.C. TO BE INSTALLED IN THE REINFORCEMENT OF THE CONCRETE.

1. VERTICAL AREA FROM CENTERLINE SHALL BE REINFORCED WITH 4# BARS AT 12" O.C. TO BE INSTALLED IN THE REINFORCEMENT OF THE CONCRETE. SEE DETAIL S-9.1 FOR JOINT DETAILS.

- NOTES
1. VERTICAL SPACING OF JOINTS G-C
 2. PER COLUMN SCHEDULE SEE DING S-3
 3. SEE SECTION ON DING S-3 BEAM
 4. LOCATIONS OF HOIST BEAMS ARE SHOWN
 5. HOIST BEAM PLAN IS SHOWN S-4
 6. LOCATIONS ON BRIDGING ARE SHOWN
 7. HOIST BEAM PLAN IS SHOWN S-4
 8. FOR LOCATION AND DIMENSIONS OF CONCRETE STRUCTURAL DING S-10 FOR TYP DETAILS SEE
 9. AT EAST WALL AND EAST-WEST BEAMS TO BE
 10. TOP OF ALL NORTH-SOUTH BEAMS TO BE AT
 11. ALL BOTTOM REINFORCEMENT IN COLUMNS SHALL
 12. HAVE BOTTOM CHAIRS EXTENDED TO CONNECT TO
 13. METAL DECK JOINT
 14. CONSTRUCTION SHALL BE 1/2" DEEP IS 8#
 15. BEAM AND JOINTS SHALL BE 5" VERTICALLY SPACED
 16. CONTRACTOR SHALL CORRECT SIZE AND LOCATION OF REINFORCEMENT WITHIN WALL CORNER AND REINFORCEMENT SHALL BE INSTALLED WITHIN WALL CORNER.



KEY PLAN